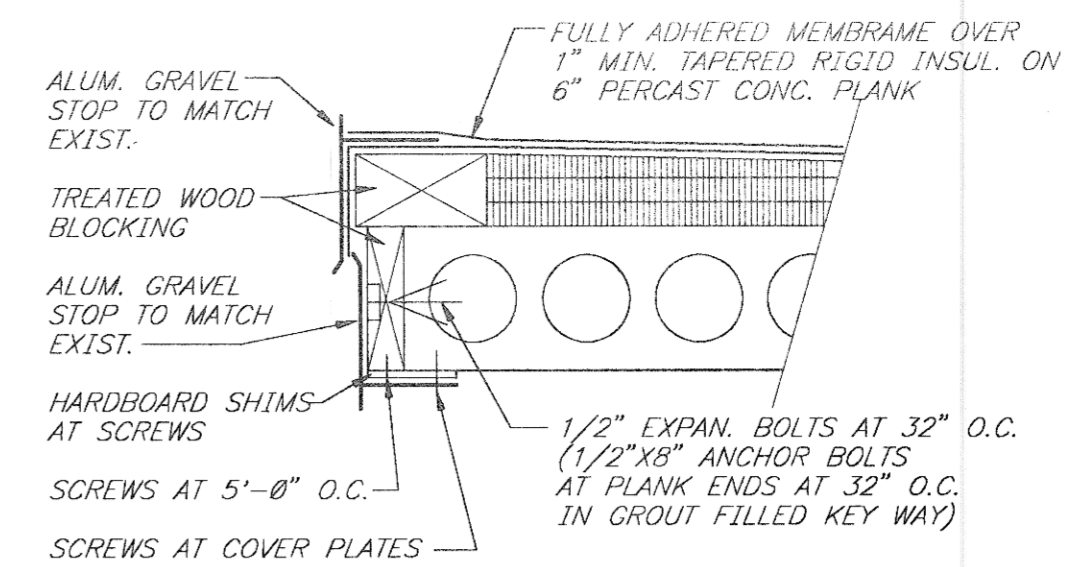
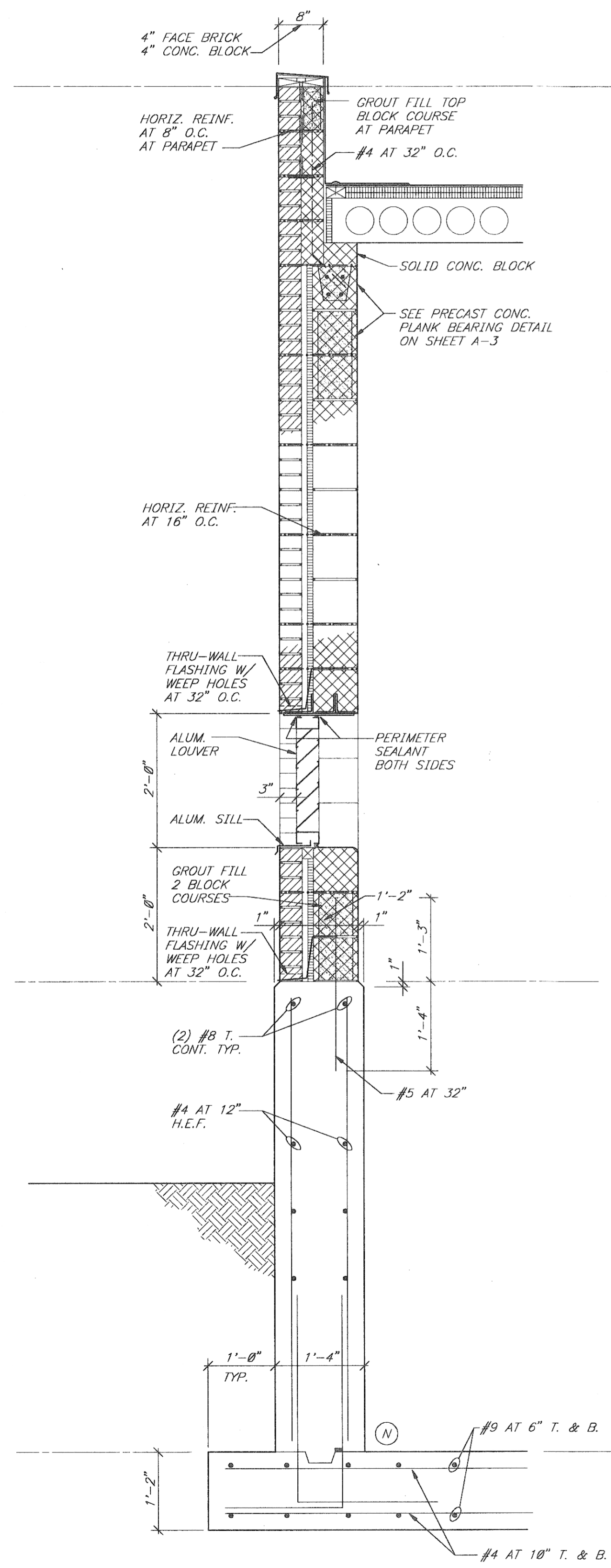


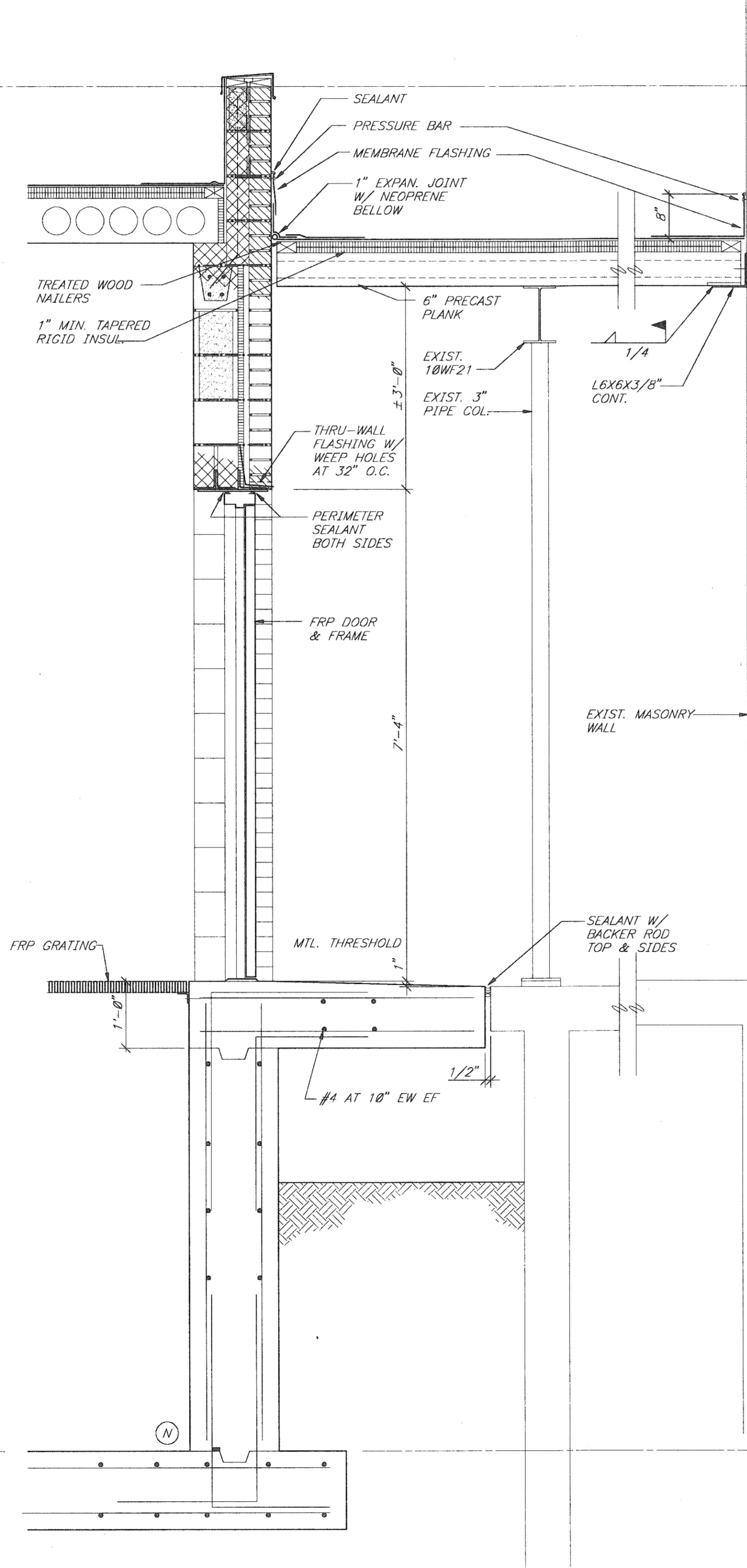
REV	DESCRIPTION	BY	DATE	CHKD
△	ISSUED FOR REBID		1/9/95	
△				
△				
△				



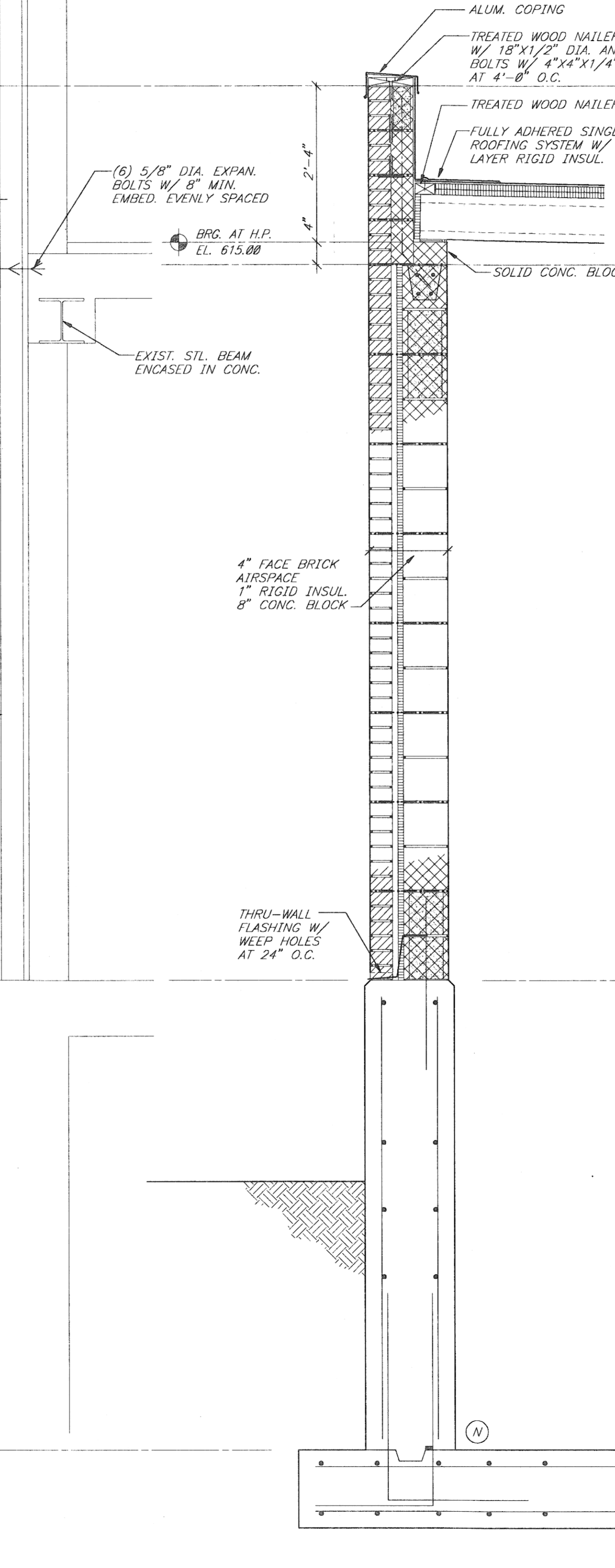
DETAIL 5
SCALE: 1 1/2" = 1'-0"



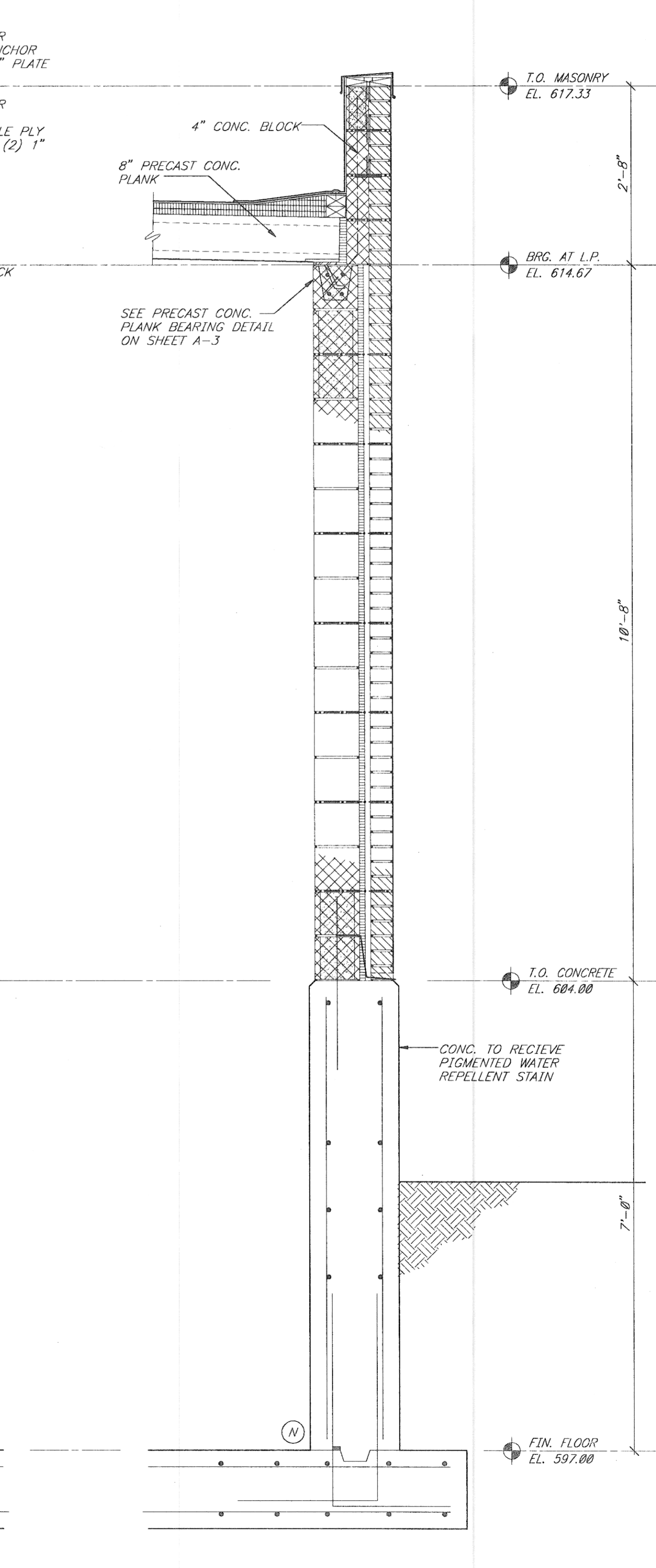
WALL SECTION 1
SCALE: 3/4" = 1'-0"




WALL SECTION 2
SCALE: 3/4" = 1'-0"



WALL SECTION 3
SCALE: 3/4" = 1'-0"



WALL SECTION 4
SCALE: 3/4" = 1'-0"

Ann Arbor, Michigan Detroit, Michigan Eatonville, Michigan Grand Rapids, Michigan Lansing, Michigan		 McNAMEE, PORTER & SEELYE, INC. ENGINEERING EXCELLENCE SINCE 1964	
McNAMEE, PORTER & SEELYE, INC.			
DESIGNED <i>MKG, SJM</i>		CHECKED <i>A. BAIR</i>	
SCALE <i>AS NOTED</i>		CADD DATE <i>01-05-95 SEE 3</i>	
PART <i>M/S/0225/01438/ANSECT</i>		<i>AC</i>	
CITY OF TRAVERSE CITY, MICHIGAN WATER TREATMENT PLANT IMPROVEMENTS SODIUM HYPOCHLORITE SYSTEM ADDITION			
ARCHITECTURAL / STRUCTURAL			
WALL SECTIONS, DETAILS & SCHEDULES			
DIVISION	CONTRACT		SHEET
	<i>225.14-W-2(R)</i>		<i>A-2</i>
	OF 3		